



Expert For RENTAL

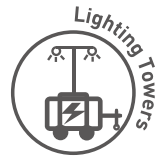
GENERATOR SETS & LIGHTING TOWERS

Global Leader In Distributed Solar Hybrid Solutions & Off Grid Systems

MPMC GROUP OF COMPANIES



www.mpmc-china.com



www.mpmclighttower.com



www.mpmcbess.com



www.mpmc-hybrid.com



www.semookii.com

WWW.MPMC-GROUP.COM



MPMC POWERTECH CORP.

3rd Floor, Building 1, Powerlong City Plaza, No.2449
Jinhai Rd., Pudong, Shanghai 201209, China.

+86-21-60970158

+86-15000854420

sales@mpmc-china.com

www.mpmc-china.com

MPMC Powertech® -2023 © All rights reserved



MPMC POWERTECH CORP.

Global leader in distributed solar hybrid solutions & off-grid systems



120 Countries

Products are exported to 120 countries



52 Types

Three categories of 52 types of products



16000 Sets

Annual production capacity



50 Specialists

50 solution experts focused on different applications



107 Patents

6 invention patents, 91 utility model patents, 8 software copyrights and 2 appearance patents.

With lower carbon, greener, more reliable and more intelligent customized solutions .

MPMC POWERTECH CORP. (stock code: 832266) was established in Pudong New Area, Shanghai, 2008. As the global leader in distributed solar hybrid solutions & off-grid systems, MPMC focus on independent research & development, full process intelligent manufacturing, and global marketing & service, committed to high quality development and high-end brand positioning. MPMC produces and sells intelligent emergency generator sets, mobile hybrid energy lighting towers, hybrid energy power stations and lithium-ion battery energy storage solutions. Currently, MPMC's products have been exported to more than 120 countries and regions, and it has in-depth cooperation with more than 60 dealers which covers the Americas, Europe, Oceania, Africa, the Middle East, Southeast Asia and the Commonwealth of Independent States. In addition, MPMC has established holding subsidiaries or offices in overseas countries such as US, UAE and South Africa. MPMC has a professional team composed of industry experts and senior engineers, and has established a joint laboratory of distributed hybrid energy cloud technology in cooperation with Tongji University. By using the independently developed intelligent energy management cloud platform "More Power Cloud", the laboratory is committed to conducting technical research on global hybrid energy micro grid cloud management. MPMC aims to become the global leader in hybrid energy power solutions and provide customers around the world with lower carbon, greener, more reliable and more intelligent customized solutions .

MPMC has been developed wind, solar, diesel generator and battery powered hybrid energy products since 2019, and established the holding and wholly-owned subsidiaries, SEMOOKII BESS CO., LTD. and MPMC Energy Jiangsu in 2021. By optimizing the combination of multiple energy and storage systems, MPMC provides customers with distributed hybrid energy solutions, which cover a wide range of application areas, including mining, rental, telecom, oil and gas field, and construction site, etc. The new energy products include residential energy storage and charging, on&off grid industrial & commercial energy storage, solar, battery and diesel genset micro grid, off-grid systems and lithium iron battery packs' OEM/ODM, etc. MPMC currently has more than 280 employees and is accelerating its global industrial layout to continuously improving its digital intelligent manufacturing capability, innovative application of cutting-edge technologies in the industry and customer service experience. In the past five years, MPMC's business areas have continued to expand, started as the diesel generator sets supplier and now has become a group company providing diversified solutions, including wind, solar, diesel genset and hydrogen energy power units, energy storage systems and hybrid energy management, etc. With the expansion of business, MPMC's demand for digital and intelligent production facilities and equipment is also increasing. Currently, MPMC is building MPMC Energy Jiangsu in Yangzhong, Jiangsu Province and plans to start production in the fourth quarter of 2024.



MPMC owns a digital factory and the most advanced manufacturing facilities



22000+23000+4000m²
Factory covers



5S system
5S management system



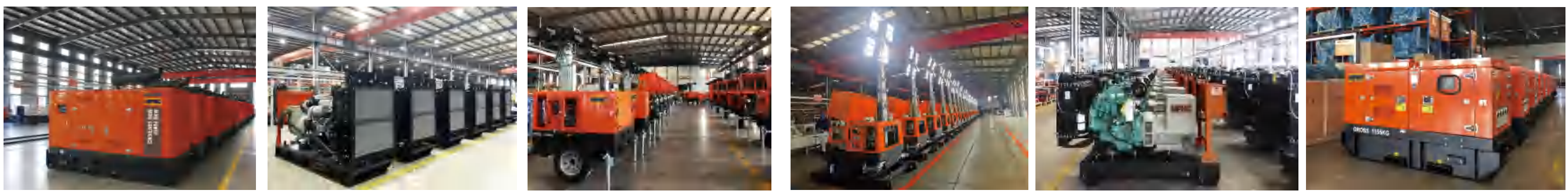
CNAS L18681
Laboratory accreditation certificate



WMI
Certificate of the World Manufacturer Identifier(WMI)Code

Excellent manufacturing capability is not only the assurance of product quality, but also the assurance of customer confidence.

- Factory covers an area of nearly 22000+23000+4000m²
- Most advanced manufacturing equipments
- Excellent product inspection system
- 5S LEAN philosophy running through the whole manufacturing process
- MPMC Digitization: CRM, ERP, PLM, MES, OA and management system
Stock availability can be checked and managed through QR codes.
The whole production process is visualize and traceable.
All the data is easy to access on PC or Wechat applet.
Equipment Management is also integrated.



MPMC has the most advanced modern manufacturing equipments in power generation industry in worldwide.



Assembling lines ▲

Automatic powder coating lines



CNC laser cutting machine



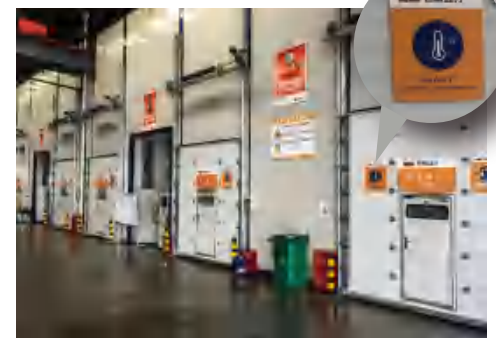
Shot blasting machine



CNC bending machine



Perfect testing rooms



Engine storage area (upto 600 stocks)



MPMC boasts of perfect quality control system



CE certificate



TLC certificate



ARCADIS certificate



ISO9001 Quality system certified



ISO14001 Quality system certified



ISO45001 Quality system certified

High quality products created under strict quality control system

Strict standard on product testing and process inspection is formulated to ensure product quality. From the moment when materials arrive in the workshop to the time for delivery, all the essential processes are under inspection and control by professional inspectors. Products with defects are not allowed to move to the next procedure unless the problems are well settled. Through complete quality control system, all-round control is performed over the aspects from design to production, from personnel to equipment, from process and material to the working site, so as to satisfy the requirements of customers.

In order to make sure that product performance and quality meet the demanding requirements of our customers, advanced testing center is established in MPMC for new product design and delivery inspection. The inspection contents are in line with ISO8528 standard and performance requirements in special industry and regions.

The testing center can meet the requirements for testing generator of no more than 2500kw per unit. Besides conventional ones, systems to test generators in high temperature are also equipped, together with other systems to test noise level and electrical safety. In all the tests, loading, and de-loading, as well as alarming can be automatically controlled after the data is set up, with a test report automatically generated at the end.



ISO8528

Test content in line with ISO8528 international standard requirements



2500KW

Testing standards can be achieved 2500kw per unit



High and low temperature environmental testing system



Noise measurement system



Safe electrical test system

Expert For RENTAL

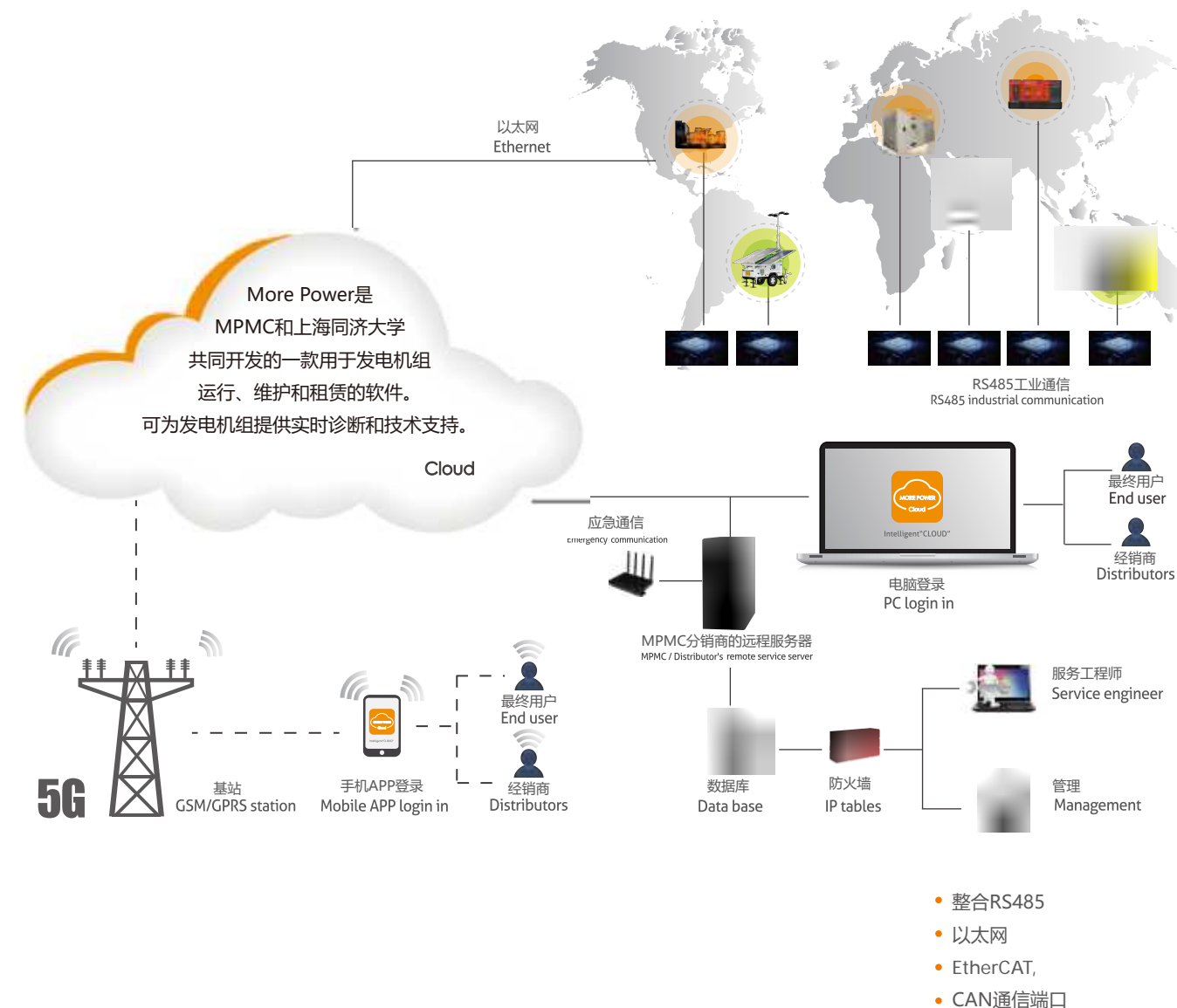
租赁专家

MPMC可以为客户提供资金支持，以解决客户因条件限制或审批时间过长而无法及时从银行获得贷款等财务问题。这样，客户就可以很容易地获得电力设备的使用权。



Internet Intelligent "More Power" Remote Service System

互联网智能“蘑菇云”远程服务系统



融资租赁，驱动未来!



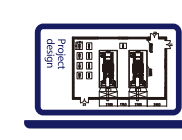
发电机组租赁公司

MPMC与客户共担风险和管控责任，获取合理利润，实现合作共赢。



现场调研

如果客户需要，MPMC售前工程师将到现场调研，讨论客户的使用要求，了解客户的特殊需求和安装条件。



项目设计

根据客户的需要，选择最适合的设备，考虑使用条件，设计控制系统、安装方案和维护计划。



金融租赁

根据客户的财务状况，MPMC联合第三方金融公司，为客户提供租售金融解决方案。解决客户资金短缺的问题。



全球服务

连接全球经销商和终端客户的“蘑菇云”系统可提供及时的诊断和技术支持。

Cases-Light Towers



Australia, Rental



Australia, Mining



California, Infrastructure



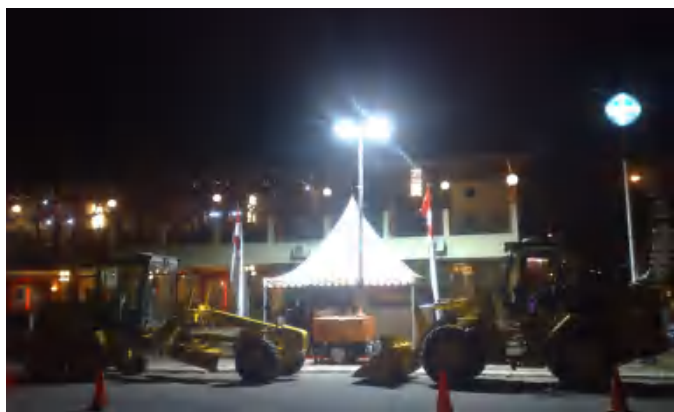
Chile, Emergency



New Zealand, Rental



China, Garden



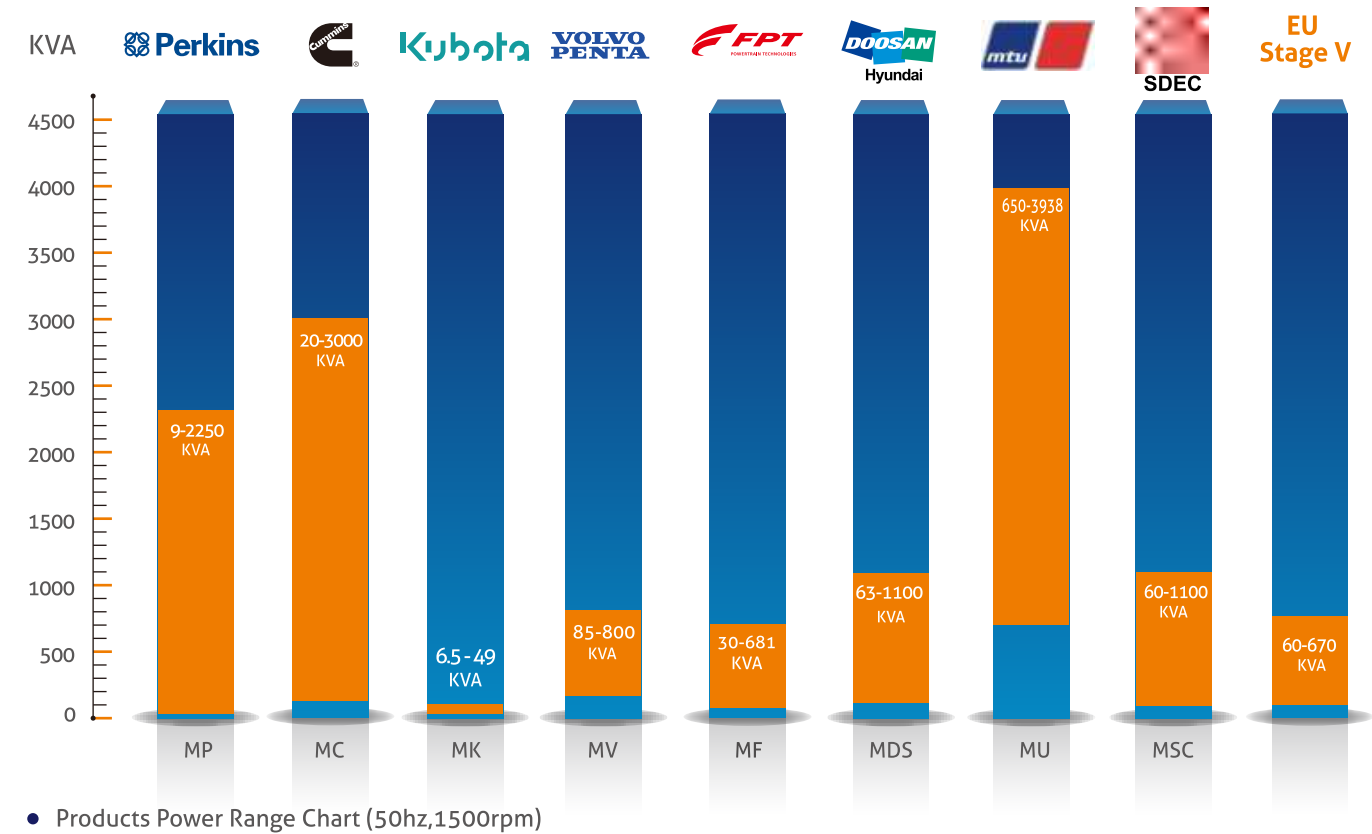
Jakarta, Exhibition



Chile, Military

Partners

One of the reasons why MPMC made such achievement is the close cooperation with the world-leading partners. MPMC won the title of the NO.1 G-OEM (Generator set original equipment manufacturer) in quantities of Perkins engines in China, TOP 3 G-OEM of Kubota engines and Top 5 G-OEM of Cummins engines in quantities in China in the past 2 years.



▼ Alternators

STAMFORD

LEROY
SOMER

MPMC

▼ Control Module

ComAp
The heart of smart control

DSE

SmartGen

▼ Breaker

ABB
Power and productivity
for a better world™

Schneider
Electric

MPMC MANUAL TYPE

LIGHTING TOWER

LD-4000

THE LIGHTING TOWER IS EQUIPPED WITH 4*1000W METAL HALIDE LAMPS

The standardized design make power supply reliable and timely. Enduring the terrible environment with durability. Safe setup and operation with good user friendliness.

Noise Level
72dB(A) at 7m away



METAL HALIDE
LIGHTING TOWER

Technical data

Model	MLT 4 KSC-4000LD	
Type of lights	Metal Halide Floodlight 4x1000w	
Light coverage (m ²) (> 5 lux)	3330	
Lamps Rotation	Manual / Electric 90°	
Pack Dimension (LxWxH)	2990x1100x2450mm	
Outside Dimension (LxWxH)	2990x2310x7500 mm	
Weight (net)	682kg	
Tank Capacity	100L	
Running Hr. (Fuel tank operating)	51h	
Engine Brand	Kubota	
Engine Model	Z482-ET03	Z482-EF02 (Tier4)
Speed (rpm)	3000	3600
Frequency(Hz)	50	60
Rated Power(kW)	6.0	7.0
Alternator Model	EK2MCT	

Engine: KUBOTA

The lighting tower with KUBOTA Engine high quality configuration.

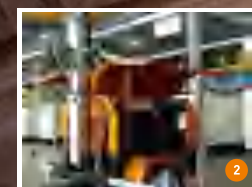
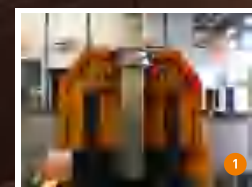
HANDWINCH, VERTICAL TELESCOPIC MAST

MAST UP TO 7.2/8.5M

Features:

Standardized design and customized refit provides most timely solution.

- Compact design for versatility.
- Telescopic, mechanical, 5 stages mast up to 7.2/8.5m.
- External hanger on the top and forklift holes.
- Manual winch for extending and retracting mast.
- Separate lockable, weather protected, powder-coated steel doors.
- Residual current device(RCD)protection.
- Individual breaker switch for each light assembly.
- Large capacity fuel tank.
- Provides 355 degree light coverage.
- Convenience outlets for electronics and small tools.
- Without driving brake and parking brake.



Details:

- 1 Quick output plug.
- 2 Big door for easy maintenance.
- 3 Individual breaker switch for each light assembly.

THE OFF ROAD TRAILER SPEED

- Without driving brake & parking brake
- The steel torsion suspension system Feature

≤ 25KM/H.

Diesel Standard type Lighting towers

50 Hz AC 230 3000 rpm 1500 rpm

60 Hz AC 240 3600 rpm 1800 rpm



Mining



Rail way



Construction



Highway



Construction Field



Rental

LD-1400

THE LIGHTING TOWER IS EQUIPPED WITH 4*350W LED (AC) LAMPS.

With extended runing time and service intervals, innovative engine technologies and programmable controls, More robust compared to traditional metal halide lighting.

Noise Level
72dB(A) at 7m away



LED
LIGHTING TOWER

Technical data

Model	MLT4YD-1400LD-1	MLT4YD-1400LD-2	MLT4YD-2000LD-1	MLT4YD-2000LD-2	MLT4YCD-1400LD-1	MLT4YCD-1400LD-2	MLT4YCD-2000LD-1	MLT4YCD-2000LD-2	
Light coverage(m ²)	Average 20 luxes	6724	9604		6724	9604	9604		
	Above 5 luxes	3310	4158		3310	4158	4158		
Generator Output (Prime Power)	RPM	3000	3600	3000	3600	1500	1800	1500	
	Hz	50	60	50	60	50	60	50	
	kW	6.0				6.0			
Engine	Brand	Yanmar				Raywin			
	Model	2TNV70-HGE				3D11G3/A	3D11G2/A	3D11G3/A	3D11G2/A
	Prime (kW)	8.5	10.0	8.5	10.0	9.1	11.1	9.1	11.1
	Emission	N/A	EPA T3	N/A	EPA T3	CHINA S5	N/A	CHINA S5	N/A
Alternator (Dingol)	Brand	Dingol				Dingol			
	Model	KT06-2				DP06-50	DP06-60	DP06-50	DP06-60
	Prime (kW)	6.0				6.0			
Fuel Tank	Capacity (L)	100				100			
	Running Hours (h)	81	73	68	60	75	72	61	57
Lamps	Type	LED				LED			
	Voltage Type	AC230	AC240	AC230	AC240	AC230	AC240	AC230	AC240
	Rated Power(W)	350		500		350		500	
	Qty	4				4			
Mast	Driven	Manual				Manual			
	Height (M)	6.095				6.095			
Overall Dimensions	L*W*H(mm)	2990*2310*7200				3060*2310*7200			
Container Loading Dimensions	L*W*H(mm)	1480*1100*2498				1550*1100*2498			
Reference Weight	kg	672				810		820	
The loading capacity	Qty	16				15			

Engine: KUBOTA

The glass lens of the metal halide floodlights have been replaced on the LED heads by robust polycarbonate lens.

MPMG HYDRAULIC TYPE

Diesel Standard type Lighting towers

50 Hz AC 230 3000 rpm 1500 rpm

60 Hz AC 240 3600 rpm 1800 rpm



LIGHTING TOWER

LHS-4000

THE LIGHTING TOWER IS EQUIPPED WITH **4*1000W METAL HALIDE LAMPS**

The standardized design make power supply reliable and timely. Enduring the terrible environment with durability. Safe setup and operation with good user friendliness.

Noise Level **72dB(A)** at 7m away



METAL HALIDE
LIGHTING TOWER

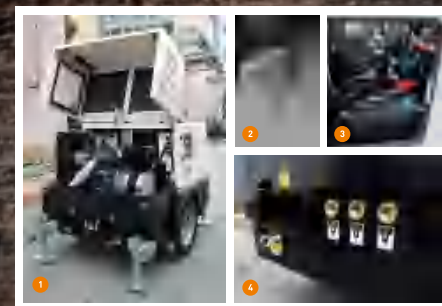
HYDRAULIC MAST HIGH STRENGTH

MAST UP TO **9 M**

Features:

Metal halide lamps as standard and LED lamps as options.

- Powerful hydraulic lifting system.
- Safety protection system to raise up and bring down the mast.
- Sound alarm and warning lights for possible wrong operation .
- Push-type emergency stop button.
- The rear flip hood providing convenient service access
- Supporting safe lifting from top of the canopy.
- User-friendly operation interface.
- Optional earth leakage protection system.
- Reliable grounding system.
- All-welded base frame proofing fuel leakage.
- Large capacity fuel tank.
- Mast 355°rotation and lights 90°vertical adjustment.
- Various lights installation available.
- Individual breaker switch for each light assembly.



Details:

- 1 Convenient clamshell design overhaul
- 2 Strong support leg configuration
- 3 Built-in big fuel tank
- 4 Sewage draining exit

The on road trailer speed **≤ 80KM/H.**

LHS-1400

THE LIGHTING TOWER IS EQUIPPED WITH **4*350W / 4*350W LED (AC) LAMPS.**

With extended run times and service intervals, innovative engine technologies and programmable controls, More robust compared to traditional metal halide lighting.

Noise Level **72dB(A)** at 7m away



LED AC
LIGHTING TOWER

Technical data

Model	MLT 4 KD-4000LHS	MLT 4 KSC-4000LHS
Type of lights	Metal Halide Floodlight 4x1000w	
Light coverage (m ²) (≥5 lux)	3834	
Lamps Rotation	Electric 90°	
Pack Dimension (LxWxH)	2130x1350x2536mm	
Outside Dimension (LxWxH)	2836x2070x9000mm	
Weight (net)	1160kg	1130kg
Tank Capacity (L)	100L	
Running Hr. (Fuel tank poerating)	55h	51h
Engine Brand	Kubota	
Engine Model	D1105	Z482-ET03 Z482-EF02 (Tier4)
Speed (rpm)	1500 1800	3000 3600
Frequency(Hz)	50 60	50 60
Rated Power(kW)	6.0 6.0	6.0 7.0
Alternator Model	DP06	EK2MCT

Engine: KUBOTA

The lighting tower with KUBOTA Engine high quality configuration.

Technical data

Model	MLT4YD -1400LHS-1	MLT4YD -1400LHS-2	MLT4YD -2000LHS-1	MLT4YD -2000LHS-2	MLT4YCD -1400LHS-1	MLT4YCD -1400LHS-2	MLT4YCD -2000LHS-1	MLT4YCD -2000LHS-2	
Light coverage(m2)	Average 20 luxes	6420	9216	6420	9216				
	Above 5 luxes	3749	4620	3749	4620				
Generator Output (Prime Power)	RPM	3000	3600	3000	3600	1500	1800	1500	
	Hz	50	60	50	60	50	60	50	
	kW	6.0				6.0		6.0	
Engine	Brand	Yanmar				Raywin			
	Model	2TNV70-HGE				3D11G3/A	3D11G2/A	3D11G3/A	3D11G2/A
	Prime (kW)	8.5	10.0	8.5	10.0	9.1	11.1	9.1	11.1
	Emission	N/A	EPA T3	N/A	EPA T3	CHINA S5	N/A	CHINA S5	N/A
	Brand	Dingol				Dingol			
Alternator (Dingol)	Model	KT06-2				DP06-50	DP06-60	DP06-50	DP06-60
	Prime (kW)	6.0				6.0			
	Capacity (L)	100				100			
Fuel Tank	Running Hours (H)	81	73	68	60	75	72	61	57
	Type	LED				LED			
Lamps	Voltage Type	AC230	AC240	AC230	AC240	AC230	AC240	AC230	AC240
	Rated Power(W)	350		500		350		500	
	Qty	4				4			
Mast	Driven	hydraulic				hydraulic			
	Height (M)	9.11				9.11			
Overall Dimensions	2836*2070*9500				2836*2070*9500				
Container Loading Dimensions	L*W*H(mm) 2130*1350*2536				L*W*H(mm) 2130*1350*2536				
Reference Weight	kg 1120				kg 1200				
The loading capacity	Qty 8				Qty 8				

Engine: KUBOTA

The glass lens of the metal halide floodlights have been replaced on the LED heads by robust polycarbonate lens.

MPMC HYDRAULIC TYPE

Diesel Standard type Lighting towers

50 Hz AC 230 1500 rpm

60 Hz AC 240 1800 rpm

DC 48V



LIGHTING TOWER

LS-1400

THE LIGHTING TOWER IS EQUIPPED WITH **4*350W** / **4*350W LED LAMPS.**

Durable LED modules are long-lasting and consume minimal power, for low total operating costs.

Noise Level **63dB(A)** at 7m away



LED
LIGHTING TOWER

HYDRAULIC MAST HIGH STRENGTH

MAST UP TO 8.5m

Features:

The LS portable lighting tower for easy mobile. AC LED as standard and DC LED as options.

- Powerful hydraulic lifting system.
- Safety protection system to raise up and bring down the mast.
- Sound alarm and warning lights for possible wrong operation.
- Push-type emergency stop button.
- The rear flip hood providing convenient service access.
- Supporting safe lifting from top of the canopy.
- User-friendly operation interface.
- Optional earth leakage protection system.
- Reliable grounding system.
- Robust sled type chassis made of stainless steel.
- All-welded base frame proofing fuel leakage.
- Large capacity fuel tank.
- Mast 355° rotation and lights 75° vertical adjustment.
- Various lights installation available.

Technical data

Model	MLT4YD -1400LS-1	MLT4YD -1400LS-2	MLT4YD -2000LS-1	MLT4YD -2000LS-2	MLT4YCD -1400LS-1	MLT4YCD -1400LS-2	MLT4YCD -2000LS-1	MLT4YCD -2000LS-2	
Light coverage(m2)	Average 20 luxes	6420	9216	6420	6420	9216	6420	9216	
	Above 5 luxes	3749	4620	3749	3749	4620	3749	4620	
Generator Output (Prime Power)	RPM	3000	3600	3000	3600	1500	1800	1500	
	Hz	50	60	50	60	50	60	50	
	kW	6.0				6.0			
Engine	Brand	Yanmar				Raywin			
	Model	2TNV70-HE				3D11G3/A	3D11G2/A	3D11G3/A	3D11G2/A
	Prime (kW)	8.5	10.0	8.5	10.0	9.1	11.1	9.1	11.1
	Emission	N/A	EPA T3	N/A	EPA T3	CHINA S5	N/A	CHINA S5	N/A
Alternator (Dingol)	Brand	Dingol				Dingol			
	Model	KT06-2				DP06-50	DP06-60	DP06-50	DP06-60
	Prime (kW)	6.0				6.0			
Fuel Tank	Capacity (L)	135				135			
	Running Hours (h)	109	98	92	81	101	97	83	76
	Type	LED				LED			
Lamps	Voltage Type	AC230	AC240	AC230	AC240	AC230	AC240	AC230	AC240
	Rated Power(W)	350		500		350		500	
	Qty	4				4			
	Driven	hydraulic				hydraulic			
Mast	Height (M)	9.11				9.11			
	Overall Dimensions L*W*H(mm)	2278*2353*9500				2278*2353*9500			
Container Loading Dimensions	L*W*H(mm)	2278*1510*2421				2278*1510*2421			
	Reference Weight	kg 1290				kg 1350			
The loading capacity	Qty	7				7			

Details:

- 1 Convenient clamshell design overhaul
- 2 Strong support leg configuration
- 3 Built-in auxiliary big fuel tank
- 4 Robust chassis with forklift hole.
- 5 Heavy duty hydraulic lifting system robust.



Engine: KUBOTA

The lighting tower with KUBOTA Engine high quality configuration.

HYBRID POWER



LIGHTING TOWER

HBL SERIES

THE HYBRID LIGHTING TOWER IS EQUIPPED WITH
4*150W LED LAMPS / 4*250W LED LAMPS / 4*350W LED LAMPS.



**MAST
UP TO
9 M**

Technical data

Model	MLT4KL-1400DHBL	MLT4YL-1400DHBL	MLT4KL-1000DHBL	MLT4YL-1000DHBL	MLT4KL-600DHBL	MLT4YL-600DHBL
Discharge Duration	hr.	9.0		12.0		15.0
Charge Duration	hr.		3.0			6.0
Pack Dimension	mm	2234*1477*2557				
Net Weight	kg	1540			1500	
Fuel Capacity	L	100				
Control System		Automatic control (Lamp / Genset / battery)				
Lamp Power	W	350		250		150
Luminous Efficiency	Lm/W	160		155		150
Luminous Flux	Lm	56000		38750		22500
Lamp Qty.	pcs	4		4		4
Total Irradiation Area (Min.±5lux,9m Mast)	m²	3780		3159		2578
Total Irradiation Area (Average±20lux,9m Mast)	m²	6400		4624		2352
Battery Model		MF51300				
Nominal Capacity	kWh	15.36				
	Ah	300				
Nominal Voltage	VDC	51.2				
Battery Qty.	pcs	1				
Engine Model		Z482-ET03 (3000rpm)	2TNV70-HGE (3000rpm)	Z482-ET03 (3000rpm)	2TNV70-HGE (3000rpm)	Z482-B-CHN-1 (1500/1800rpm) Z482-D2-EF07e (1800rpm)
Alternator Model		MD6.0-48			MD3.0-48	
Genset Rated Power	KW	6			3	
Genset Voltage Range	VDC	50~60				
Mast Lifting Type		Vertical				
Lifting Height	m	9				
Driving Type		Hydraulic				
Horizontal Rotation Angle	deg.	349				
Vertical Rotation Angle	deg.	90				
Trailer Loading Capacity	kg	1600				
Alex Type		Single alex				
Tire Size		185R14				
Braking Mode		Parking hand break + Overrun device				
Running Speed	km/h	80				



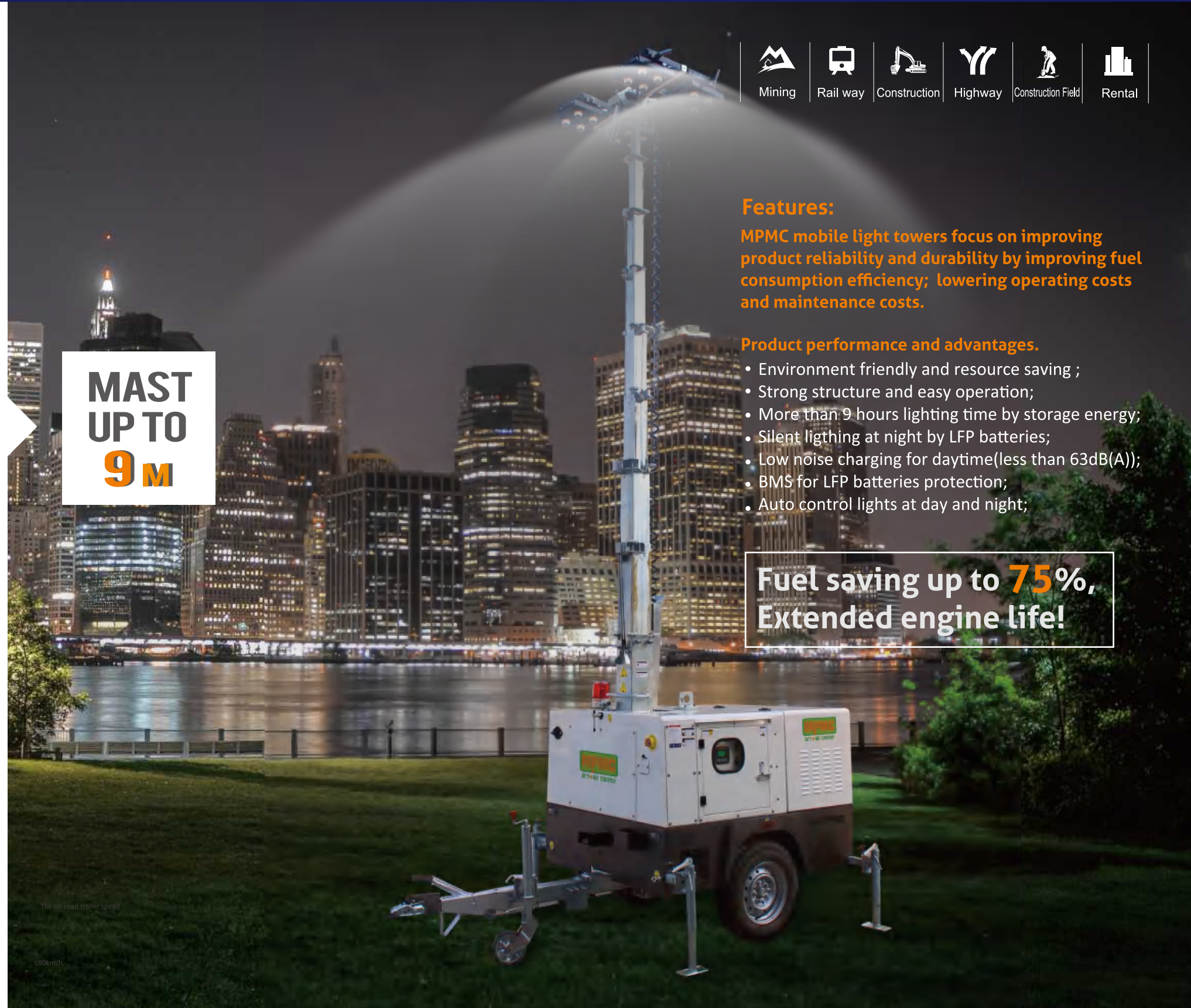
Features:

MPMC mobile light towers focus on improving product reliability and durability by improving fuel consumption efficiency; lowering operating costs and maintenance costs.

Product performance and advantages.

- Environment friendly and resource saving ;
- Strong structure and easy operation;
- More than 9 hours lighting time by storage energy;
- Silent lighting at night by LFP batteries;
- Low noise charging for daytime(less than 63dB(A));
- BMS for LFP batteries protection;
- Auto control lights at day and night;

**Fuel saving up to 75%,
Extended engine life!**



BATTERY + DIESEL

The on road trailer speed

≤80km/h

Saving up to 75% fuel

HYBRID POWER



LIGHTING TOWER

HSL SERIES

THE FULL AUTOMATIC SOLAR LIGHTING TOWERS IS EQUIPPED WITH 4×75W LAMPS / 4×112W LAMPS / 4×150W LAMPS.

ECO Friendly & Low Emission



Technical data

Model		HSL-1380	HSL-1840	HSL-2760	HSL-3680
Discharge Duration	hr.	46.0	46.0	30.0	46.0
Self Charge Duration	hr.	11.0	8.0	5.5	8.0
Solar Panel	Wp	460			
	pcs	3	4	6	8
Control System		Automatic Control (Lamp / Solar / Battery)			
Lamp Power	W	75		112	150
Luminous Efficiency	Lm/W	>200			
Lamp Qty.	pcs	4			
Luminous Flux of Lamp Array	Lm	62000		92000	124000
Total Irradiation Area (Min.≥5lux,7.2m Mast)	m²	2000		3000	4000
Battery Model		LFP MF51100			
Nominal Capacity	kWh	5.12			
	Ah	100			
Nominal Voltage	VDC	51.2			
Battery Qty. (PACK)	pcs	2		3	4
Mast Lifting Type		Vertical			
Lifting Height	m	7.2			
Driving Type		Hydraulic			
Horizontal Rotation Angle	deg.	0~355			
Vertical Rotation Angle	deg.	22~90			
Alex Type		Single alex			
Braking Mode		Parking hand break + Overrun device			
Maximal Moving Speed	km/h	80			
Loading Dimensions(LxWxH)	mm	2300*1150*2500	2300*2300*2500	2500*2300*2500	2500*2300*2500
Expanding Dimensions(LxWxH)	mm	3400*3080*7200	3400*5280*7200	3400*6480*7200	4900*6480*7200
Net Weight	kg	900	1000	1200	1450
Loading Units	40HQ	10pcs	5pcs	5pcs	5pcs

HYDRAULIC MAST HIGH STRENGTH

MAST UP TO 7.2M



Features:

Powerful design, Safe and reliable low-voltage operation system. These towable solar light towers can be used for any application where a diesel, gas or electric generator-powered light tower is needed.

- Can meet no mains and battery shortage environment.
- High performance LED lighting.
- Slided and folded solar panels, compact and green.
- The solar panel is controlled by the electric push rod.
- Convenient mains input and gasoline generator input interfaces.
- On-road trailer speed ≤80km/h.
- The mast could be rotated horizontally by 0 - 355 degrees.

Options (With extra charge)

- Electric winch, vertical telescopic mast.
- Output plug is optional according to voltage, which can load a variety of electric equipment.
- Standby gasoline / diesel generator charge the battery when shortage.
- Equipped with 4G router and web camera, supporting the function of road monitoring.
- Settable Load Model (a. 24 hours working b. Working hours setting c. 8 hours working at night only) .

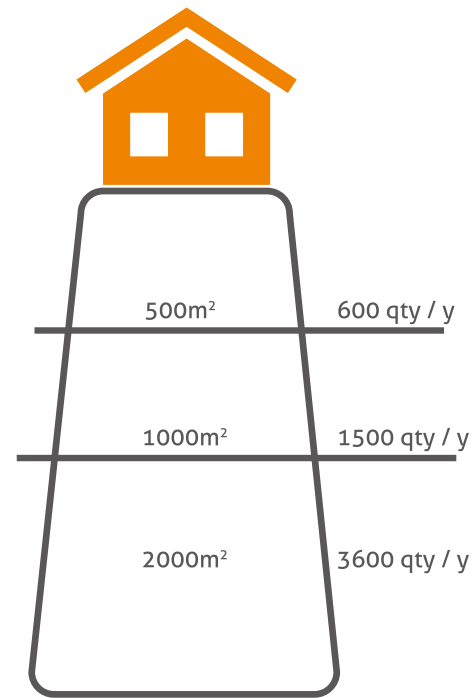
- ◀ Solar panels can be adjustable tilt angle/ fixed angle (Option)
- ◀ Solar panels can be slided and expanded



Battery type: LFP

ECO Friendly & Low Emission, just great light, complete silence and fresh air.

MPMC World® Franchise System



- Least initial fee, most beneficial to the supply chain;
- Help you set up a local factory to realize the production capacity of MPMC standard products and personalized custom products;
- Train your staff regularly ,improve product quality and production technology level;
- Use MPMC's brand influence to help you achieve your business goals;
- Using the most favorable MPMC supply chain system to achieve win-win cooperation and achieve progressive profitability.

Flexible Plant in sizes.

Capable of producing and processing

With MPMC strong support, you have nothing to worry about



Full Process Manufacturer with High Quality Products.



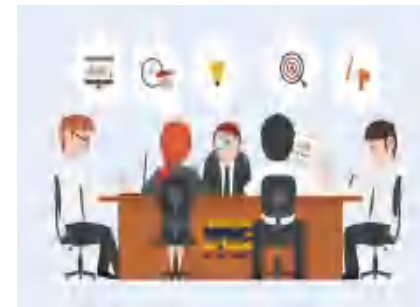
Always Market Oriented Competitive Prices.



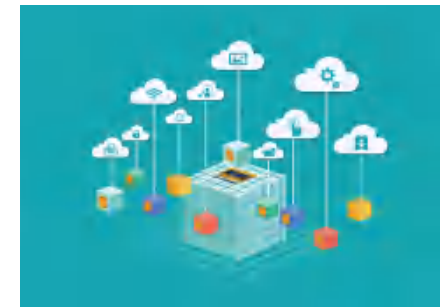
Large Stocks for Fastest Deliveries.



More Innovative Products by More Professional R&D.



Customized Projects & Solutions.



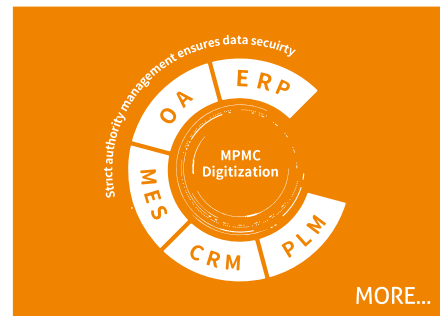
Right Software ensure Best Hardware.



Local After Training for Always Competition Leader.



Complete Accessed Supply Chain from Day One.



Digital Production & Management Support

Mature Model & Featured Technology

- Issue a power of attorney
- Unified branding corporate propaganda
- Free training
- Most Favorable Supply Chain
- Competitive price
- Exhibition funding support
- Free promotional gifts
- Official website announces franchisee information

Join MPMC World®

Factory Incubation

Technology Support

Brand Input

MPMC provides customers in-time, professional, and point to point after sales service with technically qualified team and wide service network.



- ★ Head office in Shanghai
- ★ Manufacturing base in Jiangsu
- ★ Manufacturing base in Fuzhou

- ★ USA Branch
- ★ UAE Office
- ★ SA Office

Strong and wide service network makes customers more satisfied

MPMC has numbers of senior technicians with over 12 years' experience on average, and qualified staff responsible for before and after sales service.



Consultation customer service



Maintenance Free



Super Quality, fully trusted by 14 applications in more than 120 countries all over the world